



SYNECTIX RF

**VISION**

# SYNECTIX™

## Omni-Wireless sub-GHz RF Mesh Network Monitored System

SYNECTIX RF™ is a cloud-based, wireless mesh network with true self-healing properties for emergency lighting monitoring, control and management that offers building owners, maintenance managers or service agents total control over their assets and public safety obligations, and helps manage an emergency lighting system effective and efficiently.

[LEARN MORE](#)

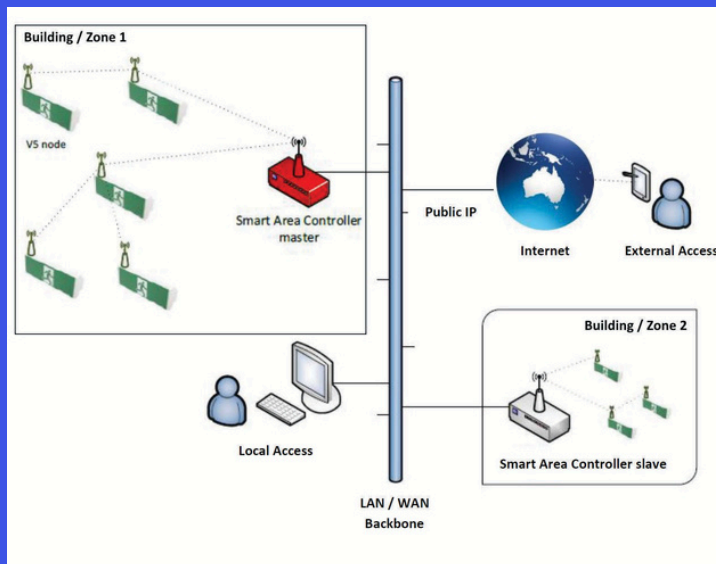






EXPLORE PRODUCTS

## Example installation:



## Intelligent Area-Based Management

The SYNECTIX RF™ network is designed around the concept of distinct "areas," each managed by a dedicated Smart Gateway (STARGATE). This distributed architecture allows for granular control and monitoring, ensuring that each zone receives the attention it needs.

## Seamless Network Integration and Connectivity

Connecting your SYNECTIX RF™ system is effortless. Each STARGATE features a standard RJ45 data port, enabling seamless integration into your existing Local Area Network (LAN). For installations without a pre-existing LAN, a wireless router can be utilised, providing flexible deployment options.

## Complete System Solution for Seamless Integration

SYNECTIX RF™ provides a comprehensive solution, including all necessary components for a fully functional emergency lighting system. This includes SYNNOVATE SYNECTIX-compatible emergency luminaires and exit signs, system hardware, and ancillary equipment, all designed to work seamlessly within the SYNECTIX RF™ ecosystem.

## Guaranteed Compliance

The SYNECTIX RF™ System is installed in strict accordance with the manufacturer's specifications, the Building Code of Australia, AS/NZS3000, and AS2293:2018. This commitment to quality and compliance ensures that your system meets the highest safety standards and provides you with complete peace of mind.





Feature	
Processor	Sitara AM3358BZCZ100 1GHz, 2000MIPS
Graphics Engine	SGX530 3D, 20M Polygons/S
SDRAM Memory	512MB DDR3L 800MHZ
Onboard Flash	4GB, 8bit Embedded MMC
PMIC	TPS65217C PMIC regulator and one additional LDO.
Debug Support	Optional Onboard 20-pin CTI JTAG, Serial Header
Power Source	miniUSB USB or DC Jack 5VDC External Via Expansion Header
PCB	3.4" x 2.1" 6 layers
Indicators	1-Power, 2-Ethernet, 4-User Controllable LEDs
HS USB 2.0 Client Port	Access to USB0, Client mode via miniUSB
HS USB 2.0 Host Port	Access to USB1, Type A Socket, 500mA LS/FS/HS
Serial Port	UART0 access via 6 pin 3.3V TTL Header. Header is populated
Ethernet	10/100, RJ45
SD/MMC Connector	microSD, 3.3V
User Input	Reset Button Boot Button Power Button
Video Out	16b HDMI, 1280x1024 (MAX) 1024x768, 1280x720, 1440x900, 1920x1080@24Hz w/EDID Support
Audio	Via HDMI Interface, Stereo
Weight	40g



EXPLORE PRODUCTS



### Emergency lighting testing, simplified

Emergency lighting management system that offers building owners, maintenance managers or service agents total control over their assets and public safety obligations.



### Compliance at your fingertips

Maintain integrity of lights by ensuring tests are performed regularly and properly as per AS2293.2.



### FAST-tracked commissioning

All fittings have been pre-commissioned to enable a plug & play, streamlined commissioning process.



### Minimal infrastructure

Integrate seamlessly into an existing LAN or easily set up a standalone, secure wireless network.

**Invest in SYNECTIX RF™ and experience the future of intelligent emergency lighting management.**

